



CRETE-LEASE® 727-Xtra Release Agent Specification Sheet

Environmental Report Card

- ✓ VOC compliant
- ✓ Non-carcinogenic
- ✓ Solventless

1. PRODUCT NAME

Crete-Lease 727-Xtra Release Agent

2. MANUFACTURER

Cresset Chemical Co., Inc.
One Cresset Center
Weston, Ohio 43569
800-367-2020 USA & Canada
419-669-2041
(FAX) 419-669-2200
www.Cresset.com
Cresset@Cresset.com

3. PRODUCT DESCRIPTION

Basic Use: Crete-Lease 727-Xtra permits easy stain-free removal of forms, formliners, pallets, etc. from hardened concrete. Crete-Lease 727-Xtra is an improved version of Crete-Lease 727. You still get the consistent, excellent performance proven by years of use and now you get less odor and no Haz-Mat restrictions. (No Haz-Mat CDL endorsements required, no Haz-Mat training required and shipping is simplified.) Also, plant and distribution warehouse storage requirements are markedly increased. It:

- Cuts form clean-up time up to 70% when properly applied
- Can reduce bugholes on concrete surfaces
- Doesn't interfere with adhesion of caulk, architectural coatings, paint, sealers and curing compounds on cured concrete surfaces when properly applied
- Is excellent on aluminum forms
- Can be applied in sub-freezing or very hot temperatures
- Reduces incidences of skin rashes to an absolute minimum
- Promotes longer life of plywood forms by acting as a water repellent from inside the wood
- Can produce both high visual impact (CCS 2) and typical concrete surfaces (CCS 3, CCS 4, CCS 5-www.Cresset.com/ccs.htm)
- Increases volume that may be stored and simplifies DOT driver and HazMat regulations
- Even when 10 times more than required is applied:

TABLE OF PROPERTIES

| | |
|-------------------------|------------------|
| Color | Straw |
| Opacity | Clear |
| Freeze Temperature | -15°F (-25°C) |
| Freeze Damage | None |
| Flash Point | 220°F (105°C) |
| Viscosity (centipoises) | 15 @ 68°F (20°C) |
| Solids | None |
| Pounds per gallon | 7.37 |
| VOC | 245 g/l |

Composition: A proprietary blend of vegetable oils in mineral oil. Contains no waxes, no silicones...no carcinogens.

- No staining when cured at ambient temperatures
- Concrete surfaces are not "killed"
- Does not cause efflorescence
- The visual impact worsens

Limitations: a. Not recommended for forms or formliners made from expanded polystyrene, SBR, natural rubber or latexes made of these. Use Crete-Lease 20-VOC for all other forms and formliners.

b. Although subfreezing temperatures have no effect on the releasing action of Crete-Lease 727-Xtra, temperatures below freezing promote film thicknesses which do cause more bugholes.

Ground Shipping in the USA: Containers holding 275 gallons, 55 gallons or 5 gallons or less (regardless of quantity) are not federally regulated and shipping product in the Cresset package does not require following hazardous shipping requirements. Drivers do not need a HazMat endorsement of their CDL. HazMat training is not required.

Applicable Standards: Crete-Lease 727-Xtra Release Agent meets U.S. Army, Corps of Engineers CE-204, Section 7.10 and CE 1401.01, Section 17.4.

4. TECHNICAL DATA

Please see Tables.

5. APPLICATION

Preparatory Work: Form surfaces should be clean, dry, and free from contaminants. Apply Crete-Lease just minutes before concrete is placed or up to 14 days before if treated surface is protected.

Methods: Your choice of application methods will determine the final appearance of the concrete. Use Release Method when a form release is the primary concern; use a Visual Guide Specification for concrete where both visual impact and form reuse are primary concerns.

Release Method: Apply with any type applicator or technique. Use a sprayer, roller, brush, or mop.

Too much release agent will cause bugholes and "wormtracks" (as seen in CCS 6 - www.Cresset.com/ccs.htm), and an increased difficulty in stripping.

Dilution with fuel oil, diesel fuels, or mineral spirits will promote an increase in stripping difficulties, concrete build-up, bugholes, soft spots, and staining.

TABLE OF FORM AND FORMLINER COMPATIBILITY

| | |
|---------------------|---|
| Plywood | All Grades, Pre-oiled, Overlaid (LDO, MDO, HDO) |
| Plastics | Fiberglass Reinforced, ABS, PVC |
| Coatings | Epoxy, Urethane |
| Elastomerics | Urethane, Silicone |
| Steel | |
| Aluminum | |
| Wood | |

Visual Guide Specifications: Cresset Concrete Standard 3 (CCS 3) is typical of Crete-Lease 727-Xtra. CCS 2 is attainable when coverage rates are carefully followed. See Spray Coverage Rates Chart for specification details.

Visual Guide Specification Notes:
1. With Crete-Lease 727-Xtra, the thinner the film the better the appearance, plus the forms strip easier.

2. Form surfaces used in producing CCS 1 and CCS 2 must be as clean as the hood on a showroom car before the release agent is applied. Protect treated surfaces from precipitation, dust and debris.

3. Non-porous form surfaces are required to uniformly produce CCS 1, CCS 2, and CCS 3. Examples include HDO plywood, elastomerics, all plastics, metals, and coatings.

4. When producing CCS 4, CCS 5 or CCS 6 concrete surfaces, you may use pre-oiled or untreated plywood, or LDO or MDO overlaid plywood.

5. Sprayers designed for applying sealers and curing compounds typically apply 10 times the needed Crete-Lease. They are not recommended for producing CCS 1, CCS 2, or CCS 3.

6. Produce CCS 2 with Crete-Lease 727-Xtra, 880, 880-VOC-Xtra and 20-VOC-Xtra. Use Crete-Lease 727-Xtra when form reuse is more important than visual impact. When superplasticizers are used in the concrete mixture or visual impact is especially important use Crete-Lease 880. Use Crete-Lease 20-VOC-Xtra or Crete-Lease 880-VOC-Xtra to meet air quality (VOC) hazard and/or pollution regulations.

7. Thin spray applications of release agent at temperatures below 45°F are produced by increasing spray pressure about 10 psi.

SPRAY COVERAGE RATES TO OBTAIN HIGH VISUAL IMPACT CONCRETE

Flat Spray Tip Pressure

| | | Optimum Coverage Rate For | |
|------------------------|-----------|---------------------------|-----------------|
| | | CCS 2 | CCS 3 |
| 8001 tip | 30-40 psi | 40 sq ft/10 sec | 20 sq ft/10 sec |
| 800067 fine tip | 50-60 psi | 35 sq ft/10 sec | 15 sq ft/10 sec |
| 800050 fine tip | 50-60 psi | 25 sq ft/10 sec | 12 sq ft/10 sec |

Wet Film Thickness 0.0005 to 0.001 inch | 0.001 to 0.0025 inch

Notes: 1. The coverage rates are for smooth non-porous forms.
2. Distance between form and spray tip is constant; typically between 12 and 18 inches.

COVERAGE WITH CRETE-LEASE 727-Xtra

| Form Surface | (sq ft/gal) |
|-------------------|-------------|
| Hard & Smooth | 1,500 |
| Pre-oiled Plywood | 1,000 |
| Untreated Plywood | 700 |

Storage: Factory sealed containers will keep up to 2 years at temperatures from -20°F to 140°F (-30°C to 60°C). Crete-Lease 727-Xtra is a class 3B liquid for purposes of meeting OSHA storage requirements, which means much more may be stored under roof. (Section 1910.106.)

Store drums horizontally or in a position to prevent standing water from collecting over the bungs.

Precautions: Keep out of reach of children. Avoid prolonged contact with the skin. Use with adequate ventilation. See Material Safety Data Sheet for additional information.

6. AVAILABILITY AND COST

Availability: Crete-Lease 727-Xtra is available in 1 and 5 gallon containers; orange and white striped 55 gallon drums and 275 gallon MegaPaks. Contact Cresset Chemical Company for your nearest distributor.

Cost: The cost on hard, smooth surfaces is about \$0.007 per square foot (January 2007).

7. LIMITED WARRANTY

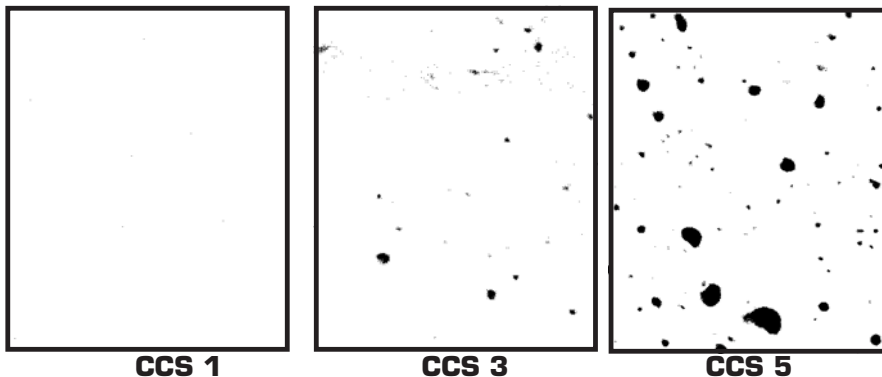
Cresset Chemical Company warrants the product against defects in materials for a period of 1 year from purchase. If Cresset receives notice of such defects during the warranty period, Cresset at its option will either replace the product or refund the purchase price. THE WARRANTY SET FORTH ABOVE IS EXCLUSIVE AND NO OTHER WARRANTY, WHETHER WRITTEN OR ORAL, IS EXPRESSED OR IMPLIED. CRESSET SPECIFICALLY DISCLAIMS THE WARRANTIES OF MERCHANTABILITY AND FITNESS FOR A PARTICULAR PURPOSE. THE REMEDIES PROVIDED HEREIN ARE BUYER'S SOLE AND EXCLUSIVE REMEDIES. IN NO EVENT SHALL CRESSET CHEMICAL COMPANY BE LIABLE FOR DIRECT, INDIRECT, SPECIAL, INCIDENTAL OR CONSEQUENTIAL DAMAGES (INCLUDING LOSS OF PROFIT) WHETHER BASED ON CONTRACT, TORT OR ANY OTHER LEGAL THEORY.

8. MAINTENANCE

Not required.

9. TECHNICAL SERVICES

To keep you abreast of new ideas in the development, selection and application techniques of release agents, we publish newsletters, technical brochures, specification sheets and Material Safety Data Sheets.



CCS 1

CCS 3

CCS 5

These simulated Figures are parts of 6 larger photographs which appear in "Cresset Concrete Standards". Write or call for your free brochure. Scale 1:1.